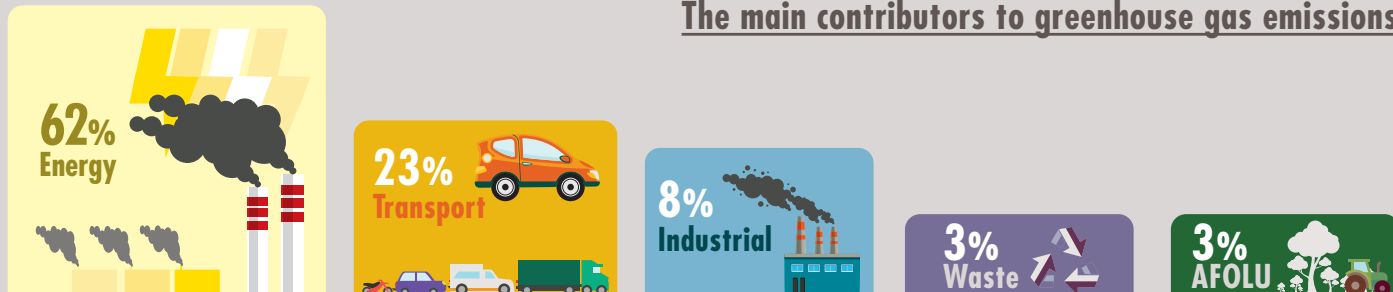


LEBANON'S GREENHOUSE GAS INVENTORY FOR 2015

TOTAL NATIONAL EMISSIONS: 27 MILLION TONNES OF CO₂eq.
= 0.06% OF WORLD EMISSIONS



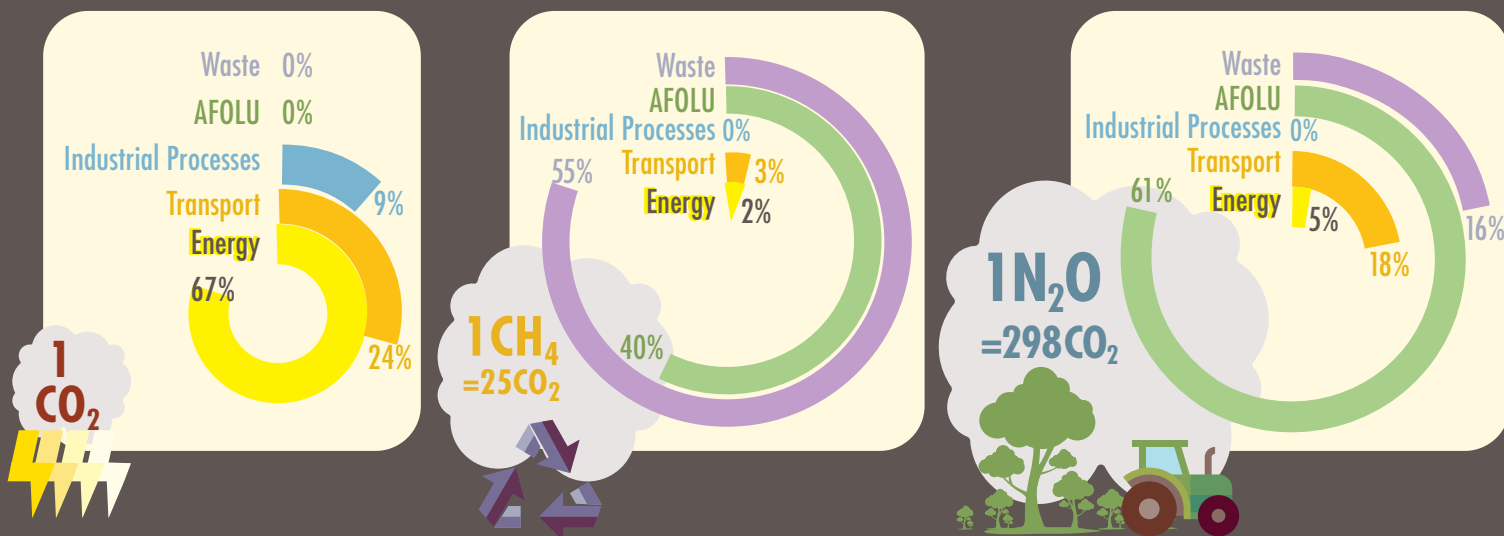
The main contributors to greenhouse gas emissions



Lebanese forests absorb 3.3 million tonnes of CO₂, bringing Lebanon's NET emissions down to 23.7 million tonnes CO₂eq.

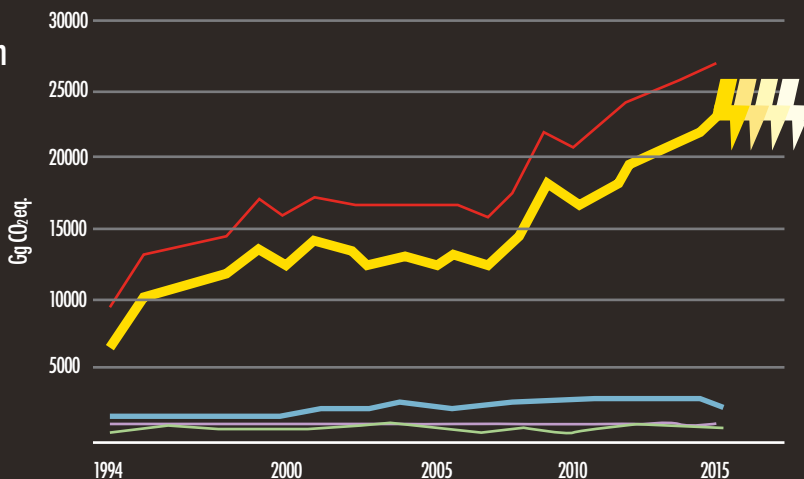
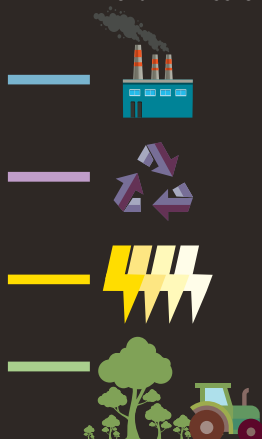


There are 3 main greenhouse gases emitted in Lebanon, with varying warming impacts



Lebanon committed to reducing its emissions unconditionally by 15% by 2030 through policies on renewable energy, clean transportation, reforestation and waste management. This will not only benefit climate change but will also serve sustainable development and reduce air pollution.

Total Emission



GHG emissions increased by approximately 3-fold, with the energy sector being the main driver of this increase.